

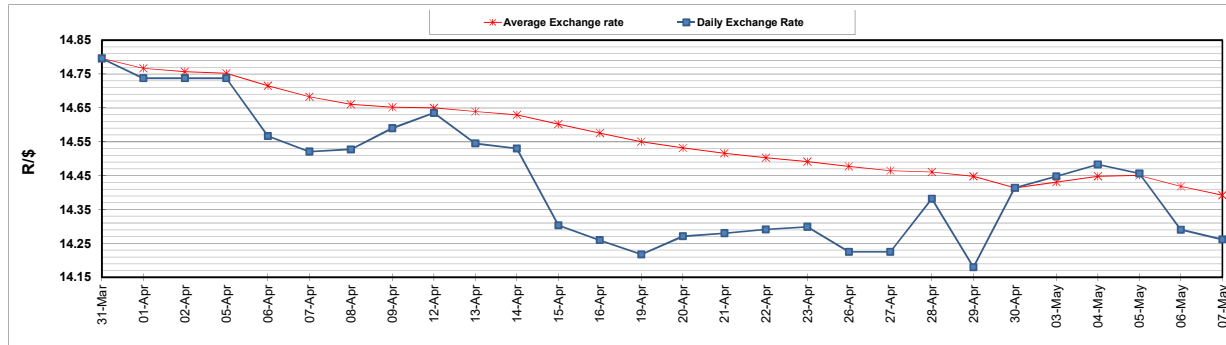
	PETROL 95 ULP	PETROL 93 ULP & LRP	DIESEL 0.05%	DIESEL 0.005%	ILL. PAR.
GAUTENG PUMP PRICE (SA c/l) AS FROM 05/05/2021	1,723.000	1,701.000	-	-	-
WHOLESALE PRICE (SA c/l) AS FROM 05/05/2021	-	-	1,446.620	1,450.020	857.488
SINGLE NATIONAL MAXIMUM RETAIL PRICE	-	-	-	-	1,076.000
BASIC FUEL PRICE - 07/05/2021 (SA c/l)	730.764	719.365	687.486	690.849	675.157
PRESS RELEASE CONTRIBUTION TO BFP 05/05/2021 - 07/05/2021 (SA c/l)	727.170	715.170	659.630	663.030	644.128
UNIT OVER/(UNDER) RECOVERY - 07/05/2021 (SA c/l)	(3.594)	(4.195)	(27.856)	(27.819)	(31.029)
AVERAGE BASIC FUEL PRICE 30/04/2021 - 07/05/2021	739.767	727.412	689.616	693.939	679.718
AVERAGE UNIT OVER/(UNDER) RECOVERY 30/04/2021 - 07/05/2021	(8.097)	(7.742)	(14.486)	(15.909)	(24.090)

ANALYSIS MOVEMENT OF AVERAGE OVER/(UNDER) RECOVERY

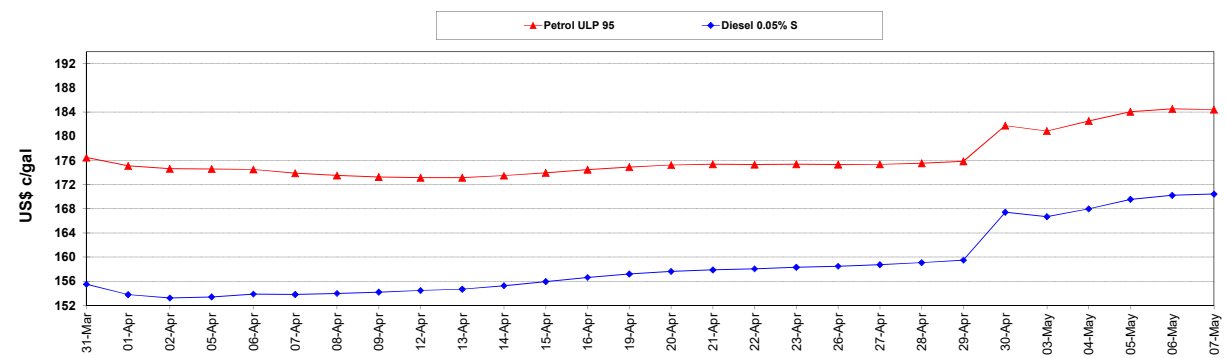
	PETROL 95	PETROL 93	DIESEL 0.05%	DIESEL 0.005%	ILL. PAR.
- MOVEMENT IN INTERNATIONAL PRODUCT PRICES	(10.965)	(10.562)	(17.160)	(18.599)	(26.725)
- MOVEMENT IN EXCHANGE RATE	2.868	2.820	2.674	2.690	2.635
AVERAGE UNIT OVER/(UNDER) RECOVERY 30/04/2021 - 07/05/2021	(8.097)	(7.742)	(14.486)	(15.909)	(24.090)

R/\$ EXCHANGE RATE - (R/\$14.2613- 07/05/2021)

EXCHANGE RATE USED IN BASIC FUEL PRICE



INTERNATIONAL PRODUCT PRICES OF BASKET USED IN BASIC FUEL PRICE



BASIC FUEL PRICE IN SA CENTS PER LITRE

